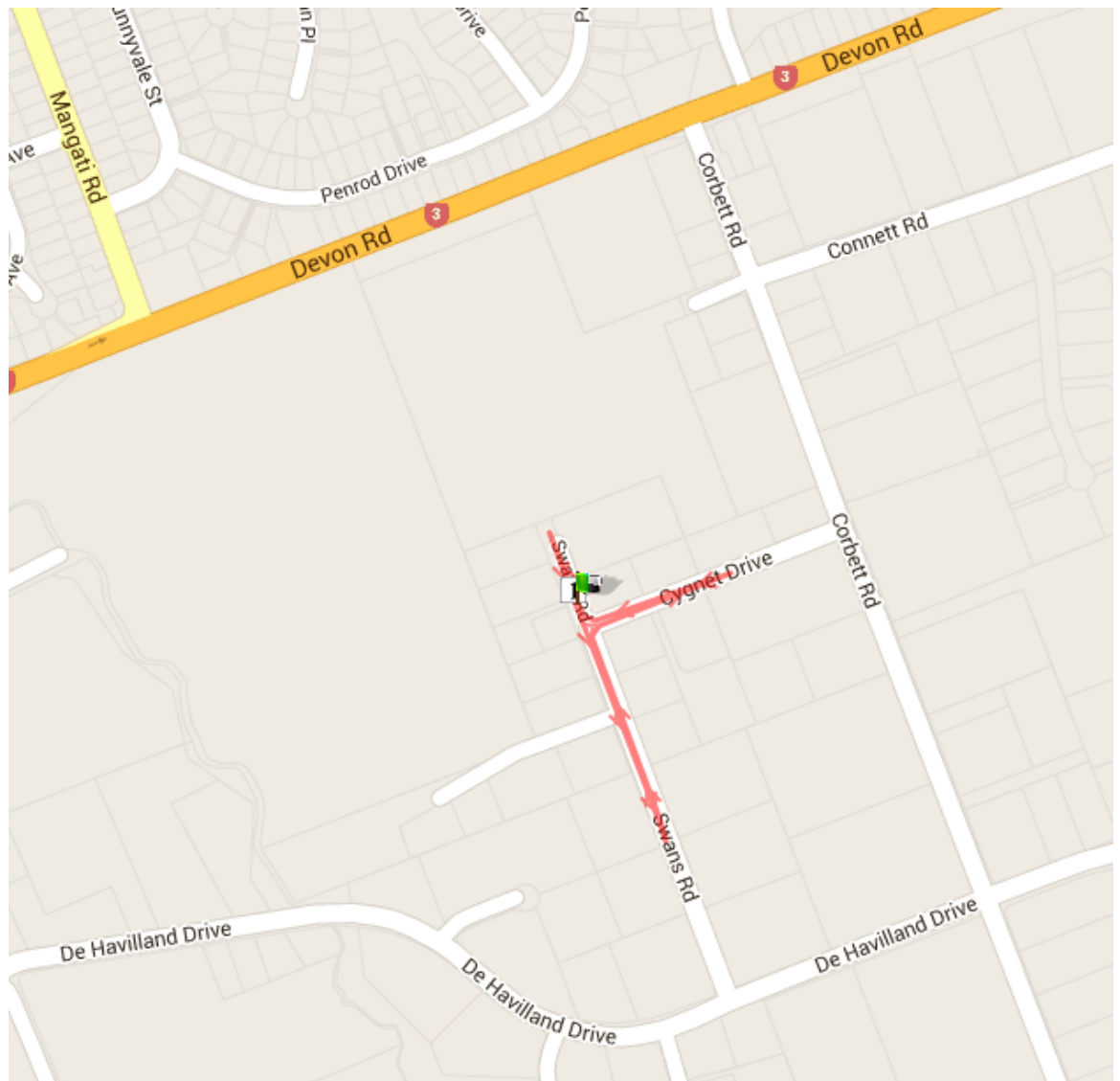


## BELL BLOCK (BURN UP)

### COURSE MAP



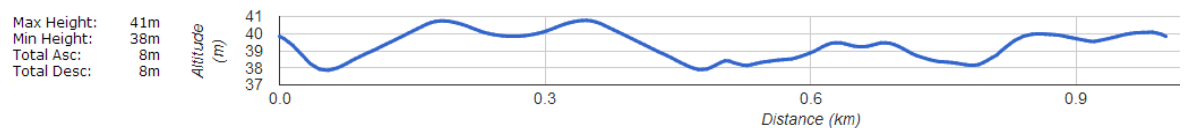
### LOCATION

Swans Road (off De  
Havilland Drive),  
BELL BLOCK

### LAP DISTANCE

1000m (1.0 km)

### COURSE ELEVATION



### LINKS

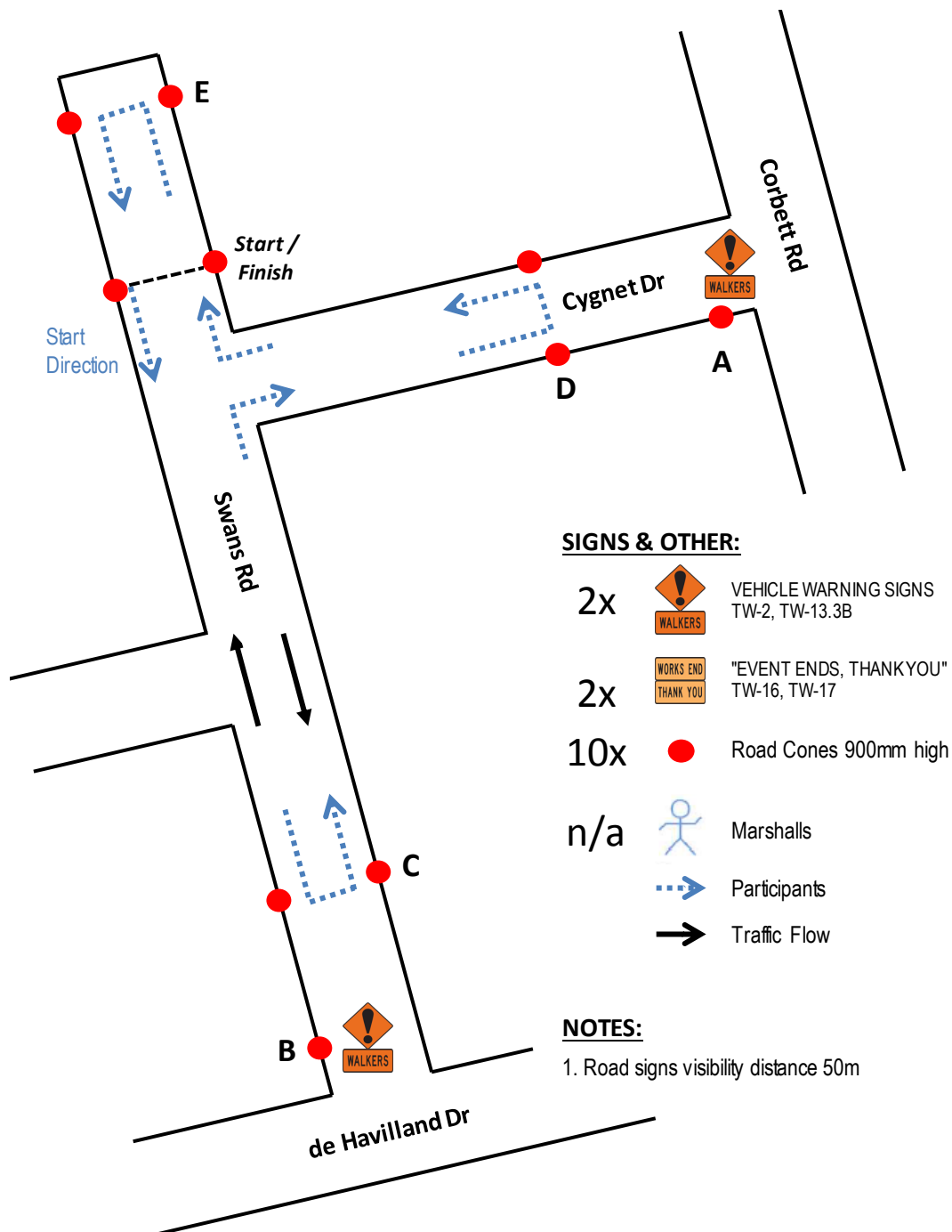
[Taranaki Race Walking Club](http://www.trwc.homestead.com/) - <http://www.trwc.homestead.com/>

[mapometer.com](http://www.mapometer.com/walking/route_3556332.html) - [http://www.mapometer.com/walking/route\\_3556332.html](http://www.mapometer.com/walking/route_3556332.html)

# BELL BLOCK (BURN UP)

## COURSE DETAILS

### TRAFFIC MANAGEMENT & COURSE LAYOUT



## LOCATION OF TRAFFIC SIGNS

### A - Signet Drive (Corbett Rd end)



### B - South end of Swans Road





## LOCATION OF COURSE MARKERS

### C - First Turn down Swans Road (approx. 280 meters after the start)



### D - Second Turn along Signet Drive (turn is level with the end of the building shown)



## E - Third turn at north end of Swans Road

Turn is level with the end of the building to the east.



END